

# Product Flyer

26

Valves  
Fittings  
Actuators

MetaValve®

# E

Series

# K

Series

# R

Series

## Actuators



M10

Multi-turn On/  
Off Actuator



M12

Quick Turn Actuator



Gearboxes



M11

Multi-turn On/Off  
Actuator With ICU



Gearboxes



M11

Multi-turn Modulating  
Actuator With ICU+

# A

## Series

**Air Valves**



### A10

Non Slam  
Dynamic Triple  
Function Air  
Release Valve



### A11

Double Orifice Air  
Release Valve



### A12

Sewage Air  
Release Valve



### A13

Eco Type Air  
Release Valve  
Double



### A14

Eco Type Air  
Release Valve  
Single



### A15

Threaded Air  
Release Valve



### A16

Polyamide Air  
Release Valve  
Single &  
Double Effect

# B

## Series



### B10

Double Eccentric  
Butterfly Valve  
Series 14



### B11

Butterfly Valve  
Series 13



### B13

Combined Butterfly  
Check Valve



### B12

Butterfly Valve  
Series 20



### B14

Wafer  
Butterfly Valve



### B15

Lug Butterfly  
Valve

# Butterfly Valves

# C

## Series

# Check Valves



### C10

Tilting Check Valve



### C11

Tilting Check Valve with Hydraulic Damper



### C13

Wafer Swing Check Valve



### C12

Swing Check Valve



### C14

Ball Check Valve



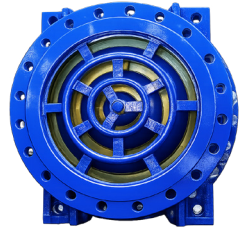
### C15

Axial Silent Check Valve



**C16**

Nozzle  
Check Valve



**C18**

Quick Closing  
Check Valve



**C17**

Slanted Seat  
Check Valve



**C19**

Dual Plate  
Check Valve



**C20**

Disc - O  
Check Valve



**C21**

Flap Valve

# D

## Series

# Dismantling Joints



### D10

Full Tie  
Rod Dismantling  
Joint



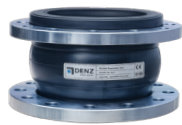
### D11

Light Type  
Dismantling Joint

# E

## Series

# Rubber Expansion Joints



### E10

Rubber  
Expansion Joint  
Steel Flanged



### E11

Rubber  
Expansion  
Joint DI Flanged



### E12

Rubber  
Expansion  
Joint Threaded

# G

## Series

# Gate Valves



**G11**

Resilient Seated Gate Valve Non Rising Stem F5



**G12**

Resilient Seated Gate Valve Rising Stem



**G13**

Metal Seated Gate Valve Non Rising Stem F4



**G14**

Metal Seated Gate Valve Non Rising Stem F5



**G15**

Metal Seated Gate Valve Rising Stem



**G10**

Resilient Seated Gate Valve Non Rising Stem F4



**G16**

Knife Gate Valve Unidirectional



**G17**

Knife Gate Valve Bidirectional



**G18**

Service Connection Valve



**G19**

Socket End Gate Valve

# F

Series

# S

Series

## Foot Valves



**F10**

Foot Valve  
With Axial  
Check Valve



**F11**

Crepine Flanged  
Inlet Strainer

## Strainers



**S10**

Basket  
Type Strainer



**S11**

Y Strainer

# H

## Series

# Hydrants



### H12

Ghost Type  
Fire Hydrant



### H10

Aboveground  
Fire Hydrant



### H11

Underground  
Fire Hydrant



### H13

N Part &  
Hydrant Key



### H14

Irrigation  
Hydrant  
Type A



### H15

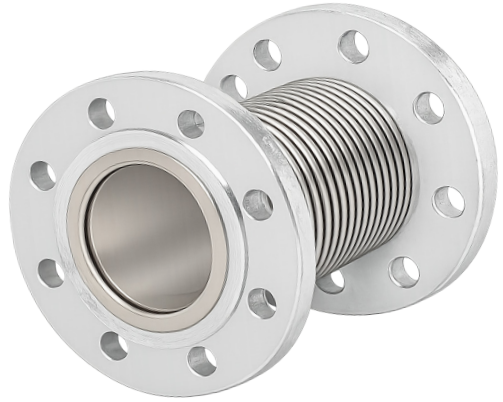
Irrigation  
Hydrant Type D



### H16

Irrigation  
Hydrant Type H

# J Series



**J10**

Axial  
Expansion  
Joint

## Axial Expansion Joints



**J11**

Angular  
Expansion  
Joint



**J13**

Dilatation  
Expansion  
Joint



**J12**

Vibration  
Expansion  
Joint



**J14**

Externally  
Pressurized  
Expansion Joint



**J15**

Decorative  
Expansion  
Joint

# L

## Series



### L10

Ball Valve  
Flanged

# Ball Valves



### L11

Ball Valve  
Flanged F5



### L12

Ball Valve  
Flanged



### L13

Ball Valve  
Threaded



### L14

Ball Valve  
Flanged



### L15

Threaded  
Ball Valve



### L16

Full Welded  
Ball Valve

# O

## Series

# U

## Series

# Flowmeters



### O10

Electromagnetic  
Flowmeter



### O11

Ultrasonic  
Flowmeter



### O12

Mechanical  
Flowmeter

# Flange Adaptors



### U10

Flange Adaptor  
Universal Type &  
PE Type



### U11

Coupling Universal  
Type & PE Type



### U12

Fittings

# R

## Series



### R10

Pressure Reducing  
Control Valve  
Globe Type



### R22

Pressure Sustaining  
& Pressure Reducing  
Control Valve  
| Y Type

**Control Valves**

**Plunger  
Valves**

**Penstock**

# P

## Series



### P10

Plunger Valve

# T

## Series



### T10

Penstock

# Others



V10

Flanges



V13

Rigid Extension  
Spindle



Y11

Globe Valve  
Bellow Seal



V11

Box Surface



V14

Accessories



Y12

Brass Valves



V12

Brass Valves



Y10

Globe Valve



Y13

Manhole Covers

PARTNERSHIP WITH



**MetaValve®**